

About 40% of women have dense breast tissue. Having dense breasts is normal – it means your breasts contain more tissue than fat.

And for these women – mammograms alone may not be enough to find breast cancer.



For information on dense breasts, visit www.DenseBreast-Info.org



Ask your doctor if Invenia ABUS screening would benefit you.

Questions about scheduling? Call our central scheduling team: (719) 530-2396

Questions about the exam, what to expect or unsure of your needs? Reach out to your PCP's office.

You can find more info about our ABUS offerings on our website:
hrrmc.com/services/imaging/mammography.

*Shown in studies conducted in the U.S., Europe, and New Zealand.

1. Breast Imaging and Reporting and Data System (BI-RADS®), American College of Radiology.
2. Boyd et al, New England Journal of Medicine 2007;356:227-36.
3. FDA PMA P110006 summary of safety and effectiveness.
4. Pisano et al. NEJM 2005; 353: 1773.
5. Ellison-Loschman, et al, PLOS ONE July 2013.
6. Shah et.al. Journal of Diagnostic Medical Sonography DOI: 10.1177/87564 79313476920 2013.



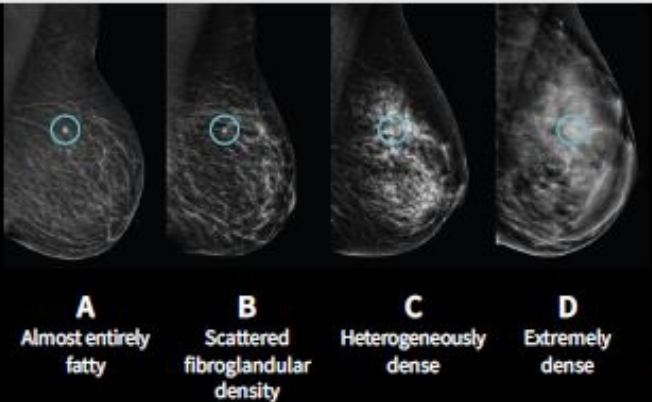
**Innovating
3D ultrasound.
Small cancer.
Big impact.**

Invenia™ ABUS
Automated Breast Ultrasound

Breast density matters

Breast density – What does it mean?

Breasts are made of fat and breast tissue. A breast with more tissue than fat is considered dense. Breast density is determined by the radiologist who reads your mammogram. There are four density categories: A, B, C, and D. C and D are considered dense.¹ Ask your doctor your density; every woman should know her breast density.



Hypothetical cancer in circle and shown on the mammograms to the left. This is easily seen in the breasts with fatty (A) and scattered (B) density, but it is obscured on the heterogeneously (C) and extremely dense (D) breasts.

On a mammogram, dense tissue and masses both appear white, so a suspicious lump may be hidden in dense tissue. When dense tissue is scanned with ultrasound, tissue appears white and masses appear black – making them easier to see. Having dense breast tissue may also increase the risk of developing breast cancer 4 to 6 times.

Different tests for different breasts

Invenia ABUS: The first ultrasound technology FDA-approved for breast cancer screening in women with dense breast tissue.



Should I have an Invenia ABUS screening exam?

Invenia ABUS breast cancer screening is specifically developed to help doctors find cancers hidden in dense breast tissue, which may be missed by mammography. If you have dense breast tissue, like the 40% of women (and 70% of Asian women), the addition of ABUS screening when used with mammography has demonstrated a 35.7% increase in cancer detection compared to mammography alone.



The positive patient experience with Invenia ABUS

From the moment you lie down on the exam table, you'll realize that Invenia ABUS screening is completely unlike a mammogram. A layer of lotion is applied to your breast, and then a scanner is firmly positioned on your breast to acquire the images. The exam takes approximately 15 minutes and provides your doctor with clear 3D ultrasound images. The physician will review the ABUS screening images along with your mammogram.



How the Invenia ABUS exam is different

Unlike 2D or 3D mammography, which uses radiation, Invenia ABUS screening uses sound waves to create 3D pictures of the breast tissue. Invenia ABUS screening along with your screening mammogram will help provide a more complete evaluation of your dense breast tissue.

How to get started

Once it's determined you have dense breast tissue, both you and your primary care provider will be notified via a letter mailed to you. ABUS screenings should be completed every year, alongside your annual mammogram. Note that an ABUS screening is not a replacement for a mammogram, as both should be completed each year.

Referrals: While a patient can "self-refer" for a mammogram, you will still need a referral from your PCP for an ABUS exam. Call your PCP to send in an order for ABUS. From there, we suggest trying to schedule your annual mammogram and ABUS exam on the same day.

Insurance: Check with your insurance provider to see what your out-of-pocket cost for an ABUS exam will be. While all mammograms are covered under insurance companies as "preventative care," some insurance companies have yet to accept ABUS as a fully preventative tool in the same way.