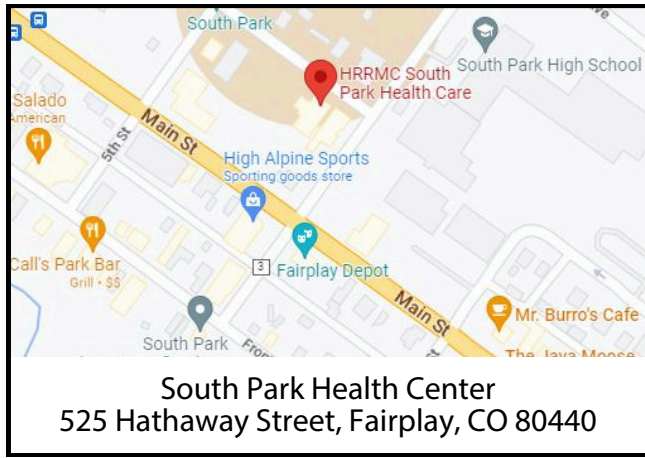
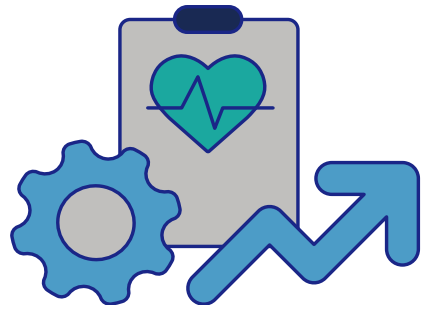


**Payment and Financial Policies**

- Payment/copay is due at the time of service.
- There will be a fee for your visit. Other services, including lab tests, will be billed in addition.
- A 15% prompt-payment discount is available to self-pay and uninsured patients.
- We accept cash, check, Visa, Mastercard and Discover.
- Claims with most insurance plans are filed on your behalf.
- Structured payment plans are available.
- Clinic billing questions may be directed to (719) 530-2475.

**Policies and Procedures**

- For EMERGENCIES, call 911 or go to the nearest hospital emergency room.
- Contact your pharmacy directly for all refills and renewals of medications. Allow 72 hours for processing. Only first-time prescriptions are generated from our clinic.
- All test and laboratory results are communicated back to the patient as promptly as possible.
- If you are unable to keep an appointment, please give 24 hours notice of cancellation.



**Pharmacy Services**

After seeing your provider, you may have prescriptions that need to be filled. These will be available for pickup at HRRMC South Park Health Care Tuesdays, Wednesdays and Thursdays of each week.

**There are several ways to enroll with the HRRMC Pharmacy:**

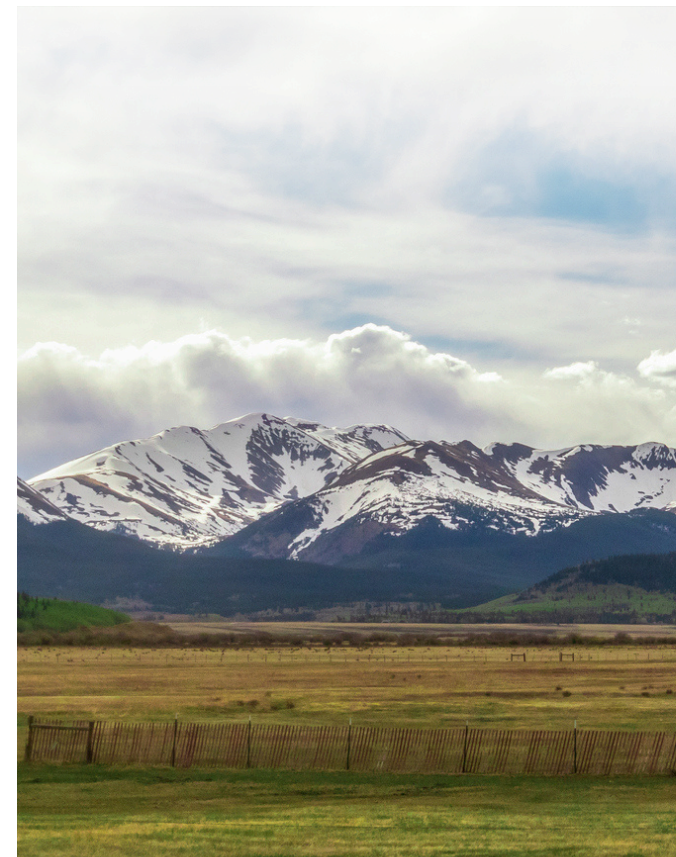
- Call (719) 530-2430.
- Visit [hrrmc.com/services/pharmacy](http://hrrmc.com/services/pharmacy) and create an account.
- Download our HRRMC Pharmacy mobile app on the Apple Store or Google Play.

On the HRRMC Pharmacy mobile app, you can manage your prescriptions, order refills, and receive notifications when your prescriptions are ready for pickup.

For any additional pharmacy questions, please call (719) 530-2430.



**HRRMC South Park Health Care**



525 Hathaway Street, Fairplay, CO 80440  
 (719) 836-0334



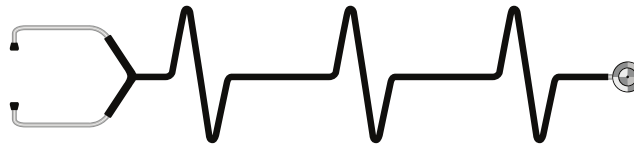
**HRRMC South Park Health Care provides comprehensive medical care for the entire family.**

## Services

- Adult & pediatric care
- Annual physicals
- Behavioral/mental health referrals
- Breathing treatments
- Cold/influenza (flu) treatments
- Cut/scrape treatments
- Diabetes care
- Ear cleaning
- High blood pressure & cholesterol treatment
- Immunizations
- Preventative health care
- Splinting, sutures/stitches
- Thyroid disorder treatment
- Wart removal
- X-ray
- Laboratory testing
- Wellness checks

## Direct Access Testing

Direct Access Testing (DAT), allows patients to order lab tests from a set menu of tests at discounted prices without a doctor's order. No appointment is necessary. Patients should register at the front desk. Cash, check or credit card payment is due at the time of service. Your insurance will not be billed. Anyone under the age of 18 must be accompanied by an adult. Test results will be mailed to patients. It is your responsibility to share results with your medical provider. Click here to download our DAT brochure.



## Health Center Hours

**Monday – Friday, 8 a.m.– 5 p.m.**  
**Call (719) 836-0334 to make an appointment**

We make every effort to schedule same-day appointments for sick patients.

**Direct Access Testing available Mon.-Fri.**

**X-rays available by appointment Mon., Wed., and Fri.**



## Our Providers

Primary care providers, Dr. Gregory Ambuske, DO and board certified family nurse practitioner Jessica Tomlinson, FNP-BC are here to care for all members of the family. Dr. Gregory Ambuske and Ms. Tomlinson are currently accepting new patients of all ages.



**Gregory Ambuske, DO**

**Medical School:** University of Tennessee Center for Health Sciences

**Residency:** Chief Resident, Dept. of Internal Medicine, UPMC Mercy

**Board Certification:** Diplomate-American Board of Internal Medicine

**Special Interests:** Hypertension, Diabetes, Cardiology related conditions

In his spare time, he enjoys hunting, fishing, running, skiing. His favorite mountain to ski at is Winter Park.



**Jessica Tomlinson, FNP-BC**

**Medical School:** Master of science in nursing, Family Nurse Practitioner, Regis University, Denver, CO

**Special Interests:** providing quality primary care to rural areas while assisting patients in finding cost-effective community resources

In her spare time, Jessica enjoys spending time with family and friends, rock climbing, surfing and hiking with her mini dachshund, Romaine.